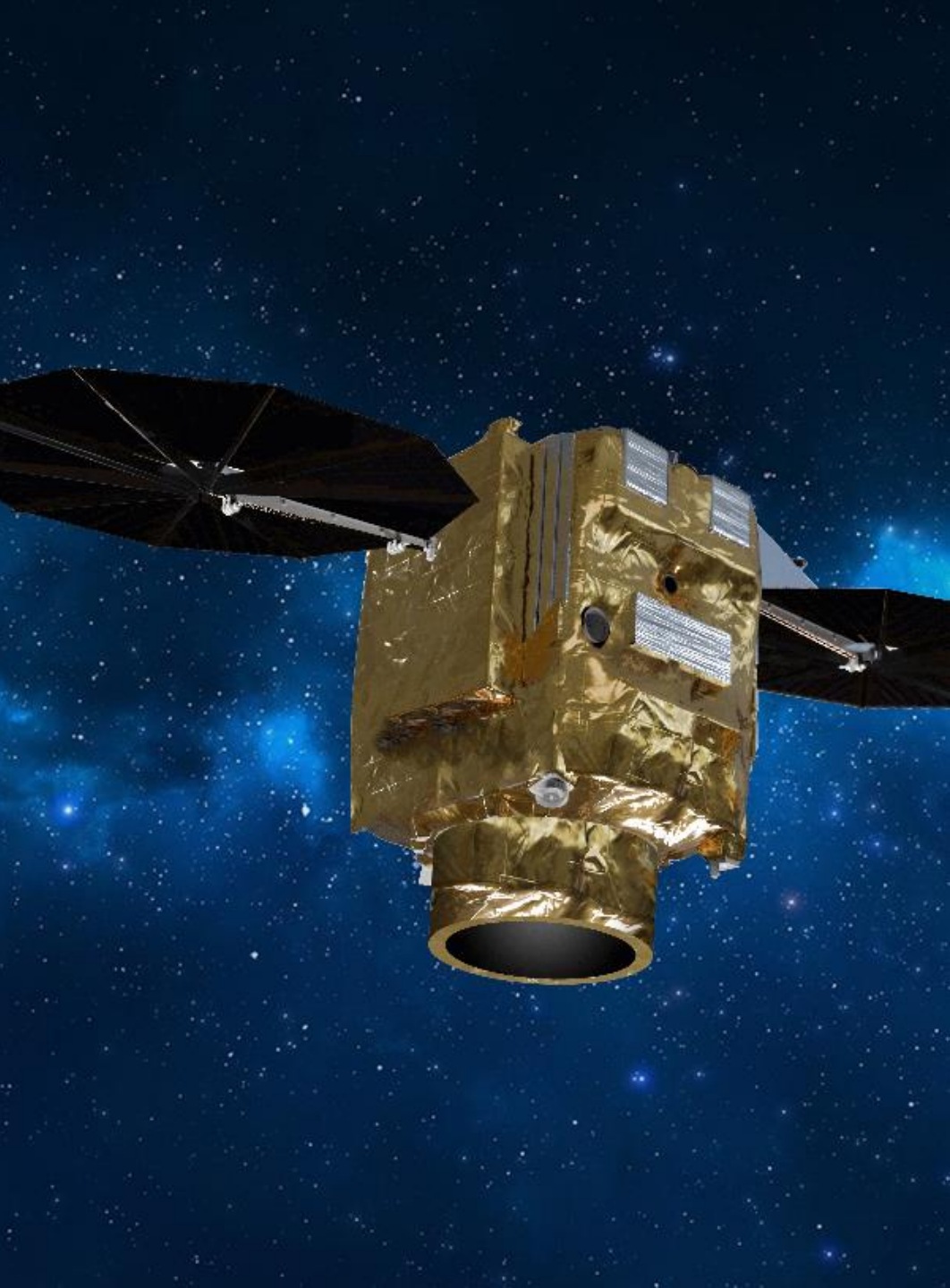


AIRBUS

TRADE
MEDIA
BRIEFING
2022





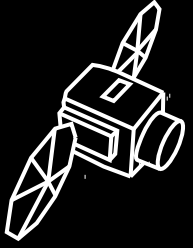
Pléiades Neo: The Most Advanced Commercial Earth Observation Constellation

François Lombard
Senior Vice President, Intelligence

Airbus Defence and Space

Earth Observation in the Space Domain





TRADE MEDIA
BRIEFING 2022

4
SATELLITES

100%
AIRBUS FUNDED

2M km²
EVERY DAY

Intra-day
REVISITS

Highest Resolution Imagery

TRADE MEDIA
BRIEFING 2022

14km swath

30cm
NATIVE RESOLUTION

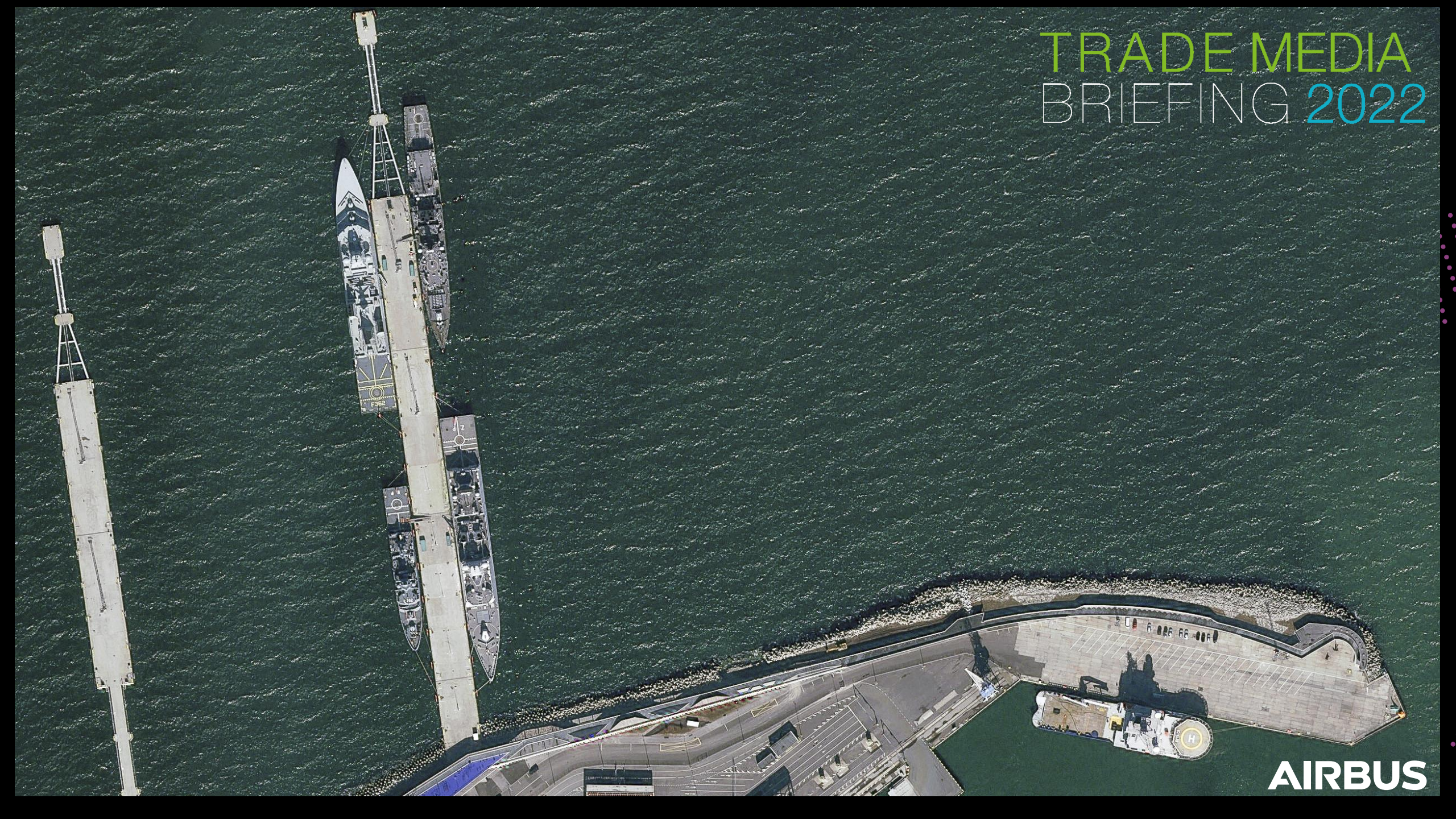
AIRBUS

An aerial photograph of a large industrial facility, likely an aircraft manufacturing plant, with several commercial airplanes parked on the tarmac. The building has a complex, multi-winged structure with a mix of grey and blue roofs. The tarmac is paved and shows various ground support equipment and taxiways. The overall scene is brightly lit, suggesting a clear day.

TRADE MEDIA
BRIEFING 2022

AIRBUS

TRADE MEDIA BRIEFING 2022



AIRBUS

An aerial photograph of a dense urban skyline, likely in a major financial hub. The image shows a variety of skyscrapers with different architectural styles, including some with unique roof designs. A large body of water is visible on the left side, and a green field is seen in the upper right. The overall scene is a high-angle view of a modern city.

TRADE MEDIA
BRIEFING 2022

AIRBUS

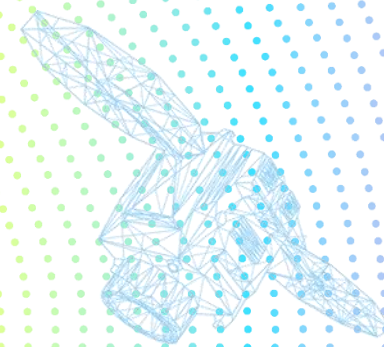
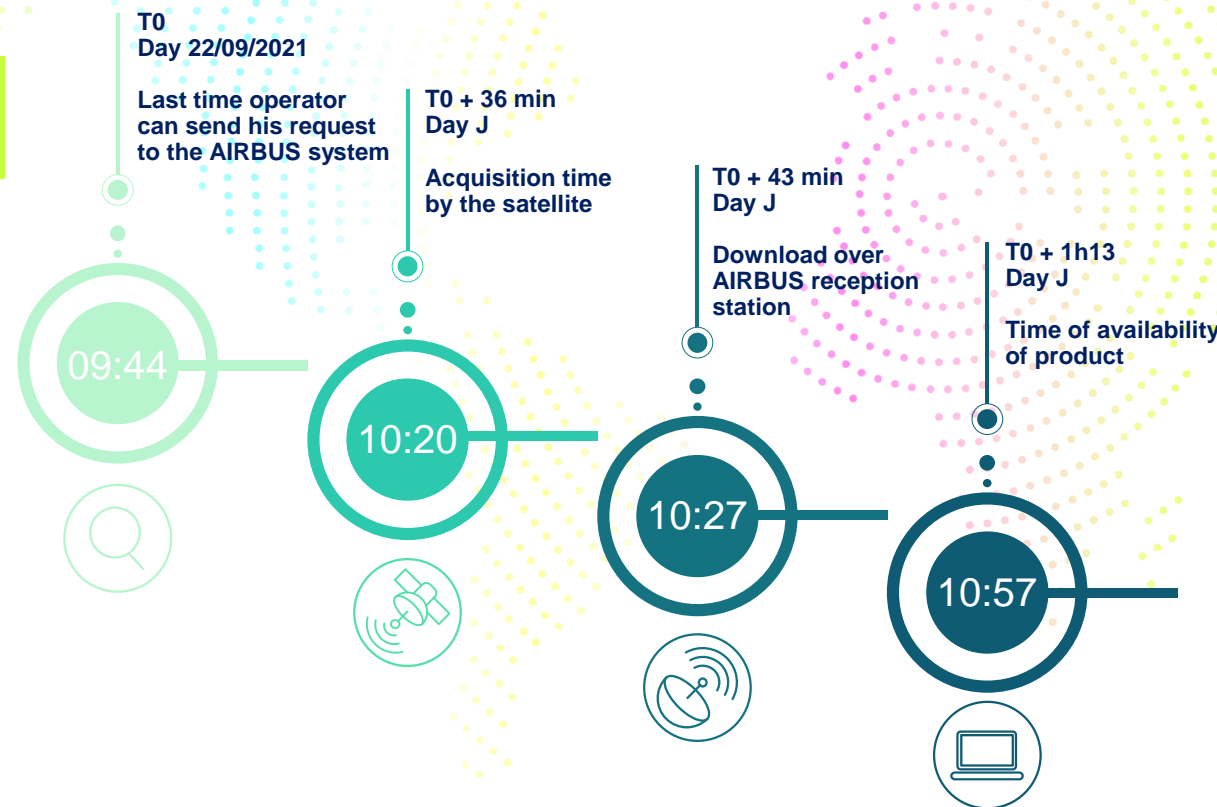
Pléiades Neo Rapid Operation

Pléiades Neo

ONE TASKING
OVER PARIS

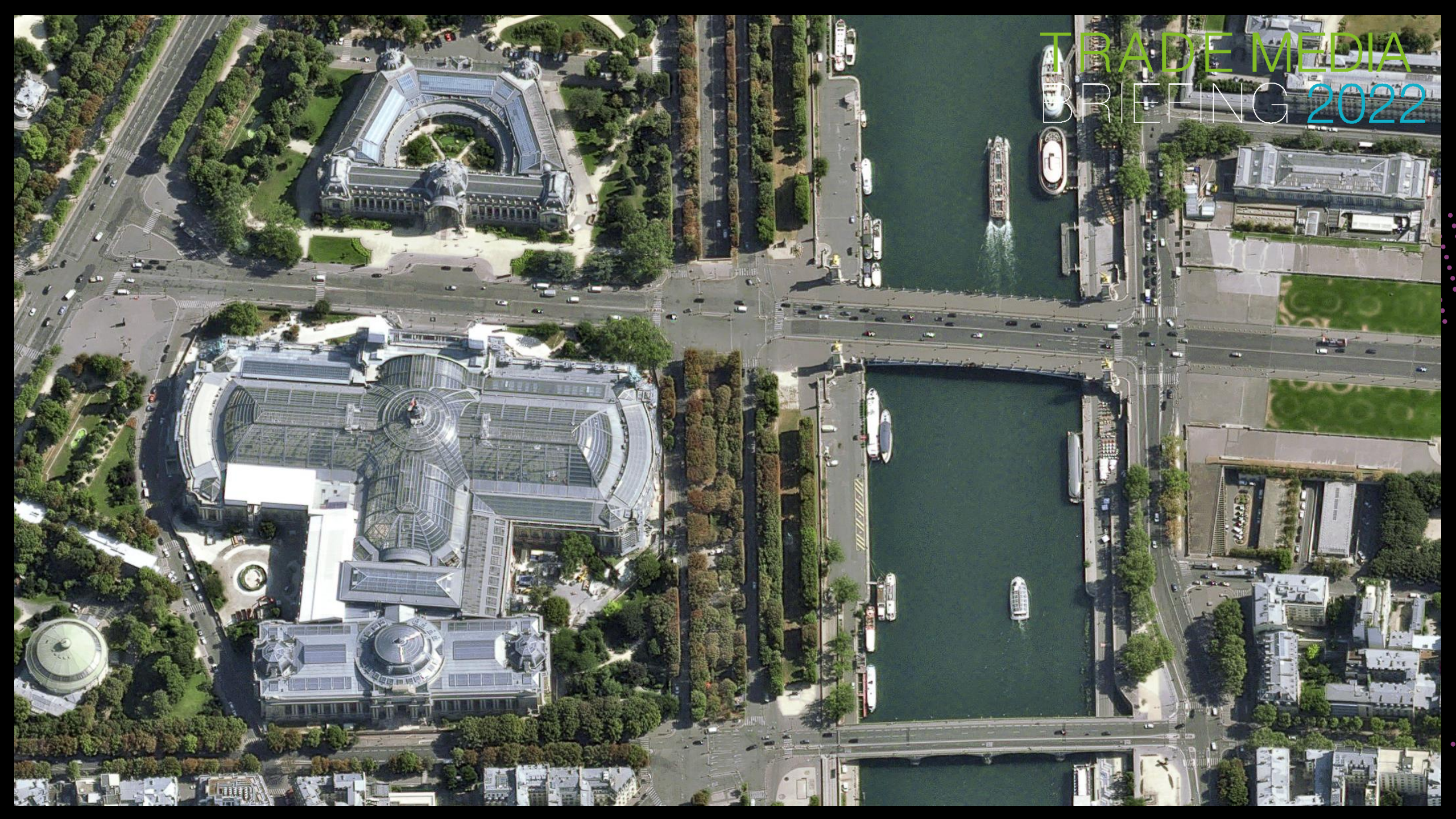
22/09/2021

Airbus reception
(UTC time)



1h13

TRADE MEDIA BRIEFING 2022



Leveraging AI - Pléiades Neo HD15

TRADE MEDIA
BRIEFING 2022



AIRBUS

HD15 Enabling Better Automatic Detection

TRADE MEDIA
BRIEFING 2022



AIRBUS

HD15 Enabling Better Automatic Detection

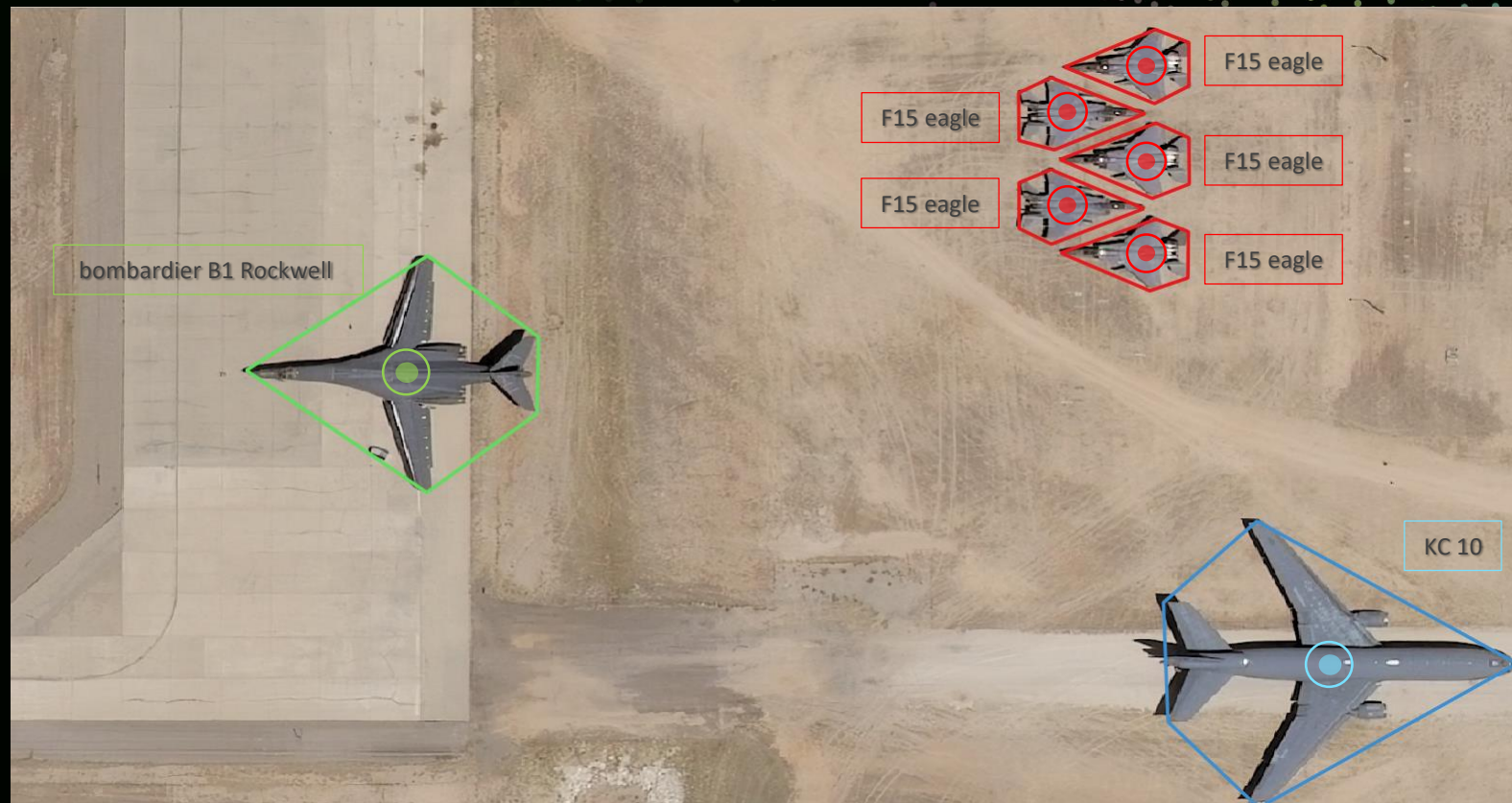
TRADE MEDIA
BRIEFING 2022



AIRBUS

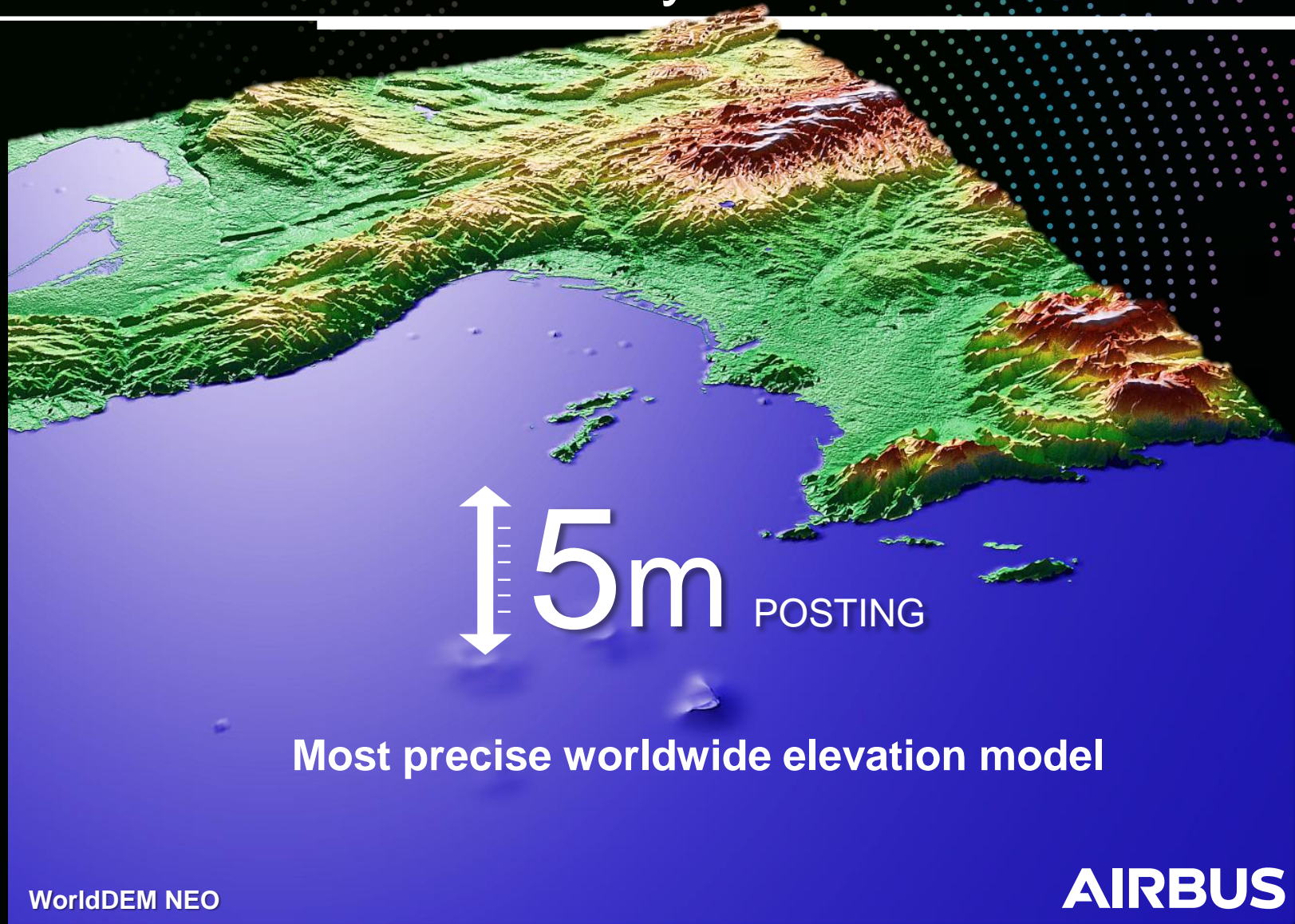
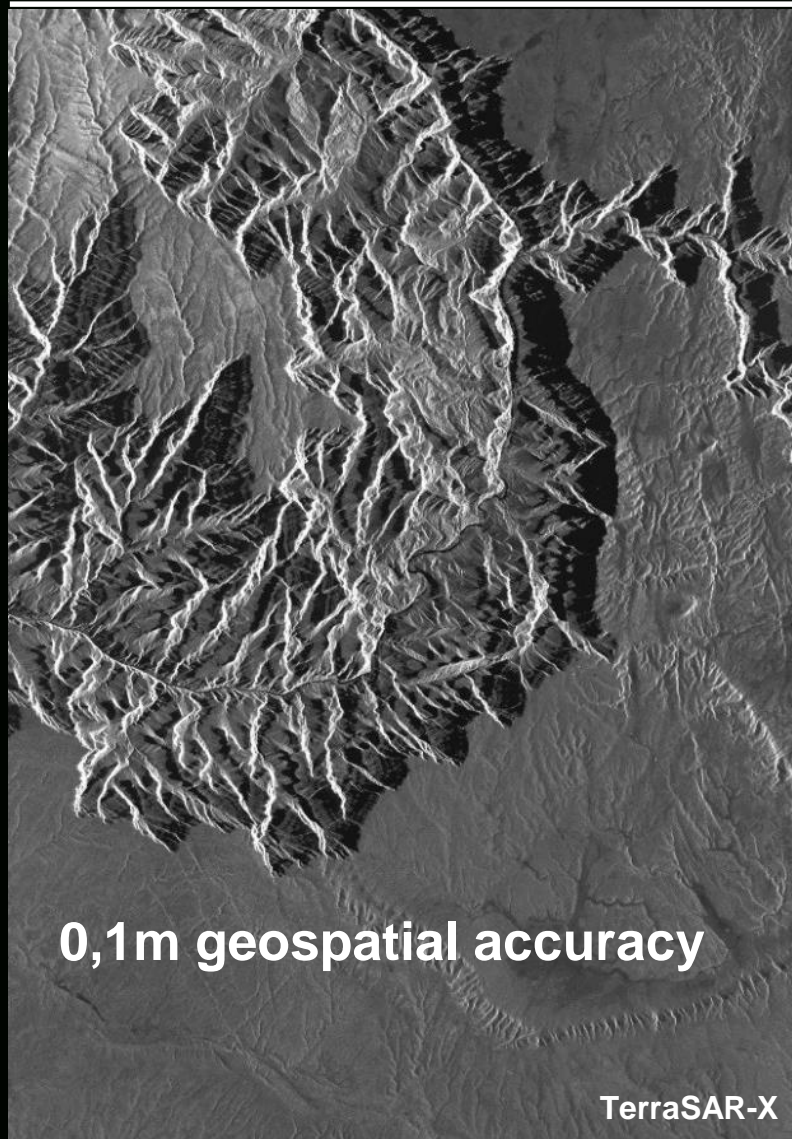
HD15 Enabling Better Automatic Detection

TRADE MEDIA
BRIEFING 2022



Leveraging Airbus Radar Satellites Accuracy

TRADE MEDIA
BRIEFING 2022



Improving Pléiades Neo Geolocation Accuracy

TRADE MEDIA
BRIEFING 2022

< 3,5m CE90

OPTICAL NATIVE LOCATION ACCURACY

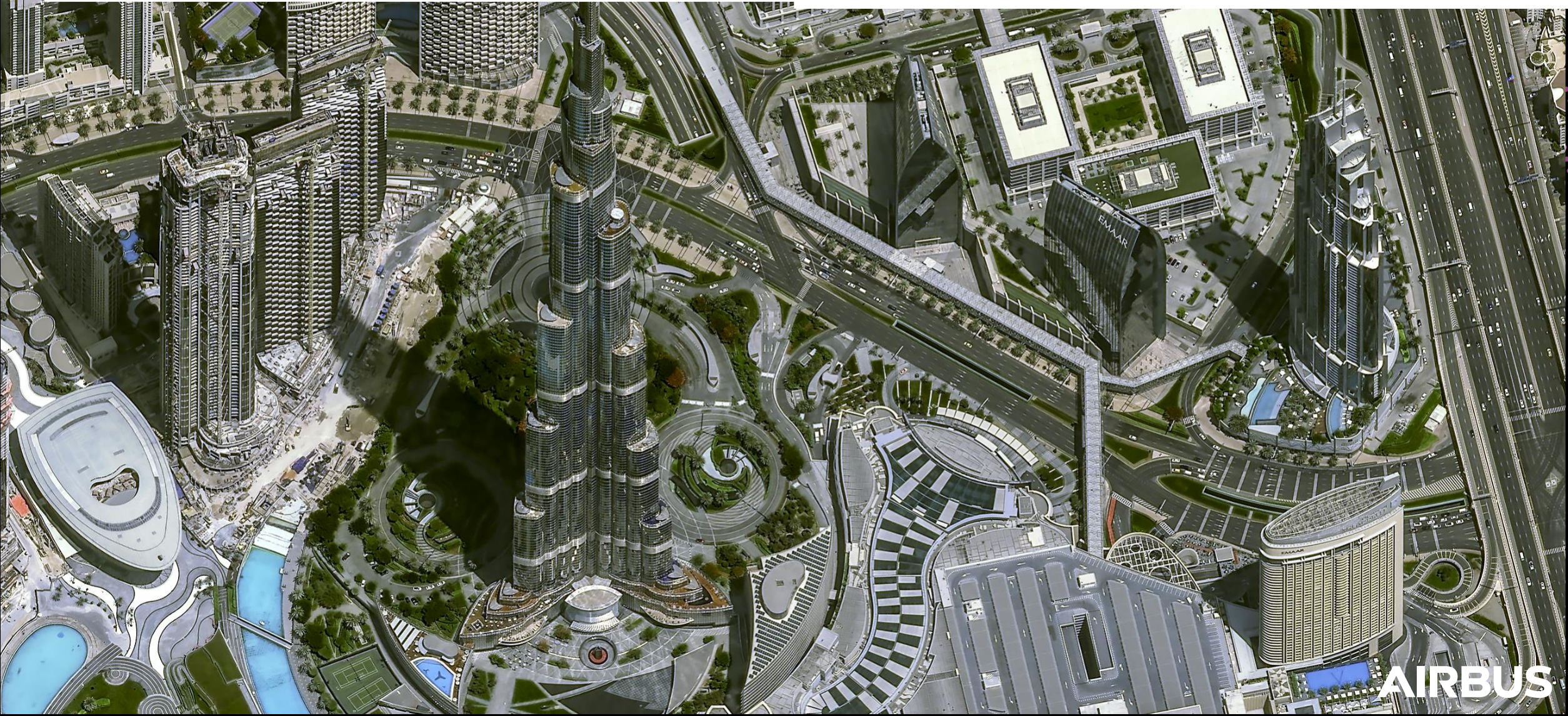
Towards 1m

LEVERAGING RADAR ACCURACY

AIRBUS

Pléiades Neo 3D Models

TRADE MEDIA
BRIEFING 2022



AIRBUS



TRADE MEDIA
BRIEFING 2022

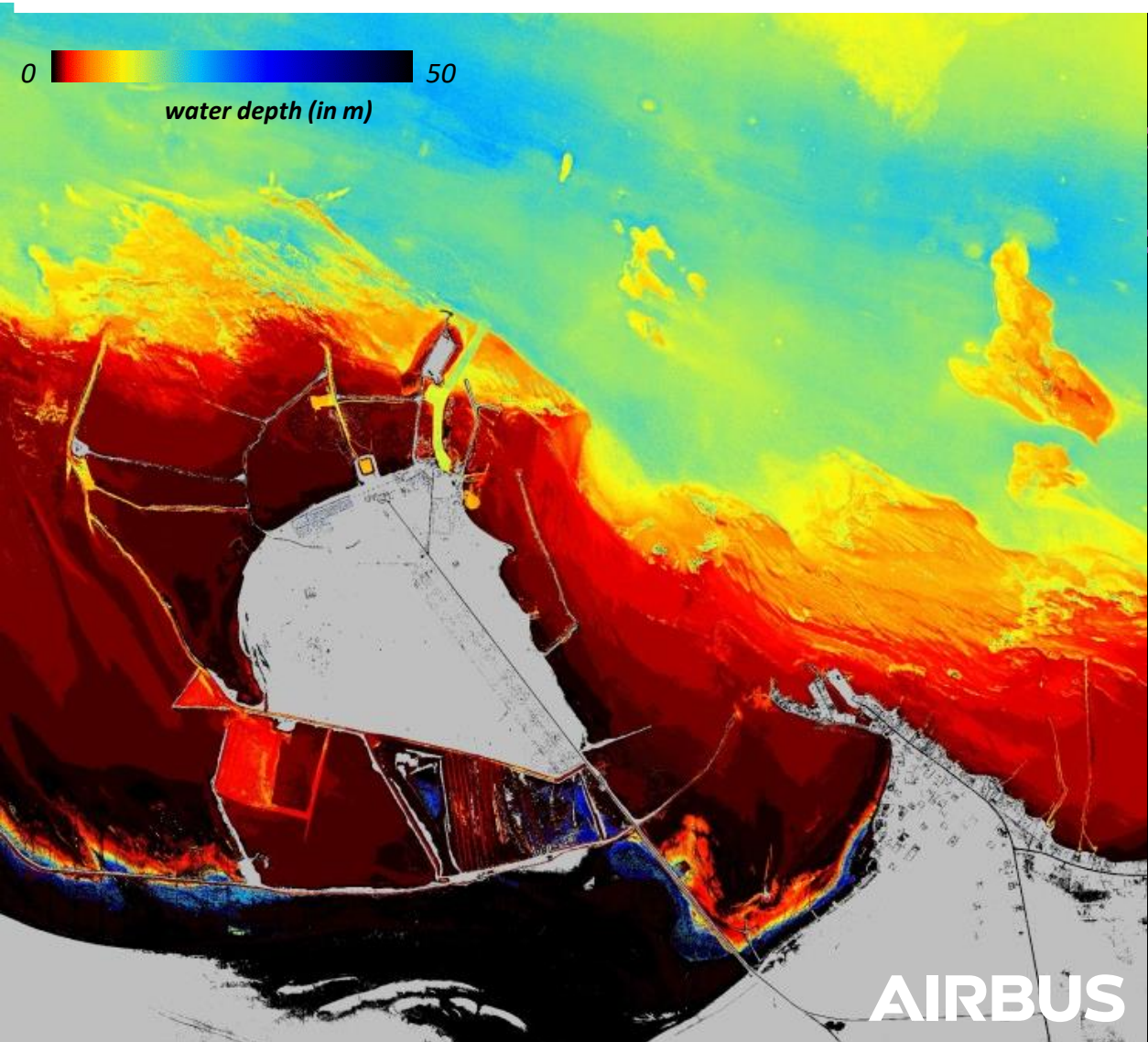
AIRBUS

Application Example: eTOD

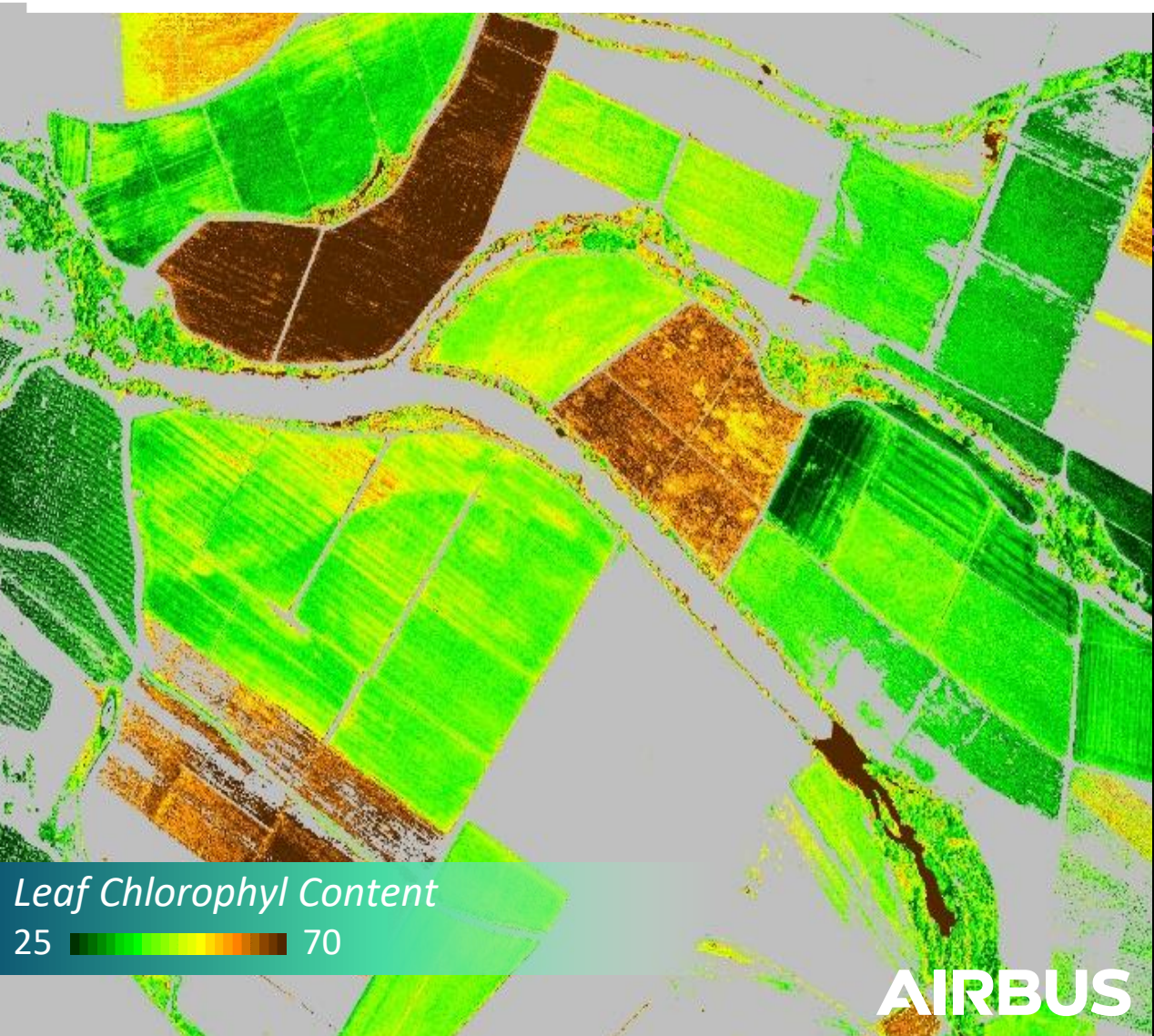
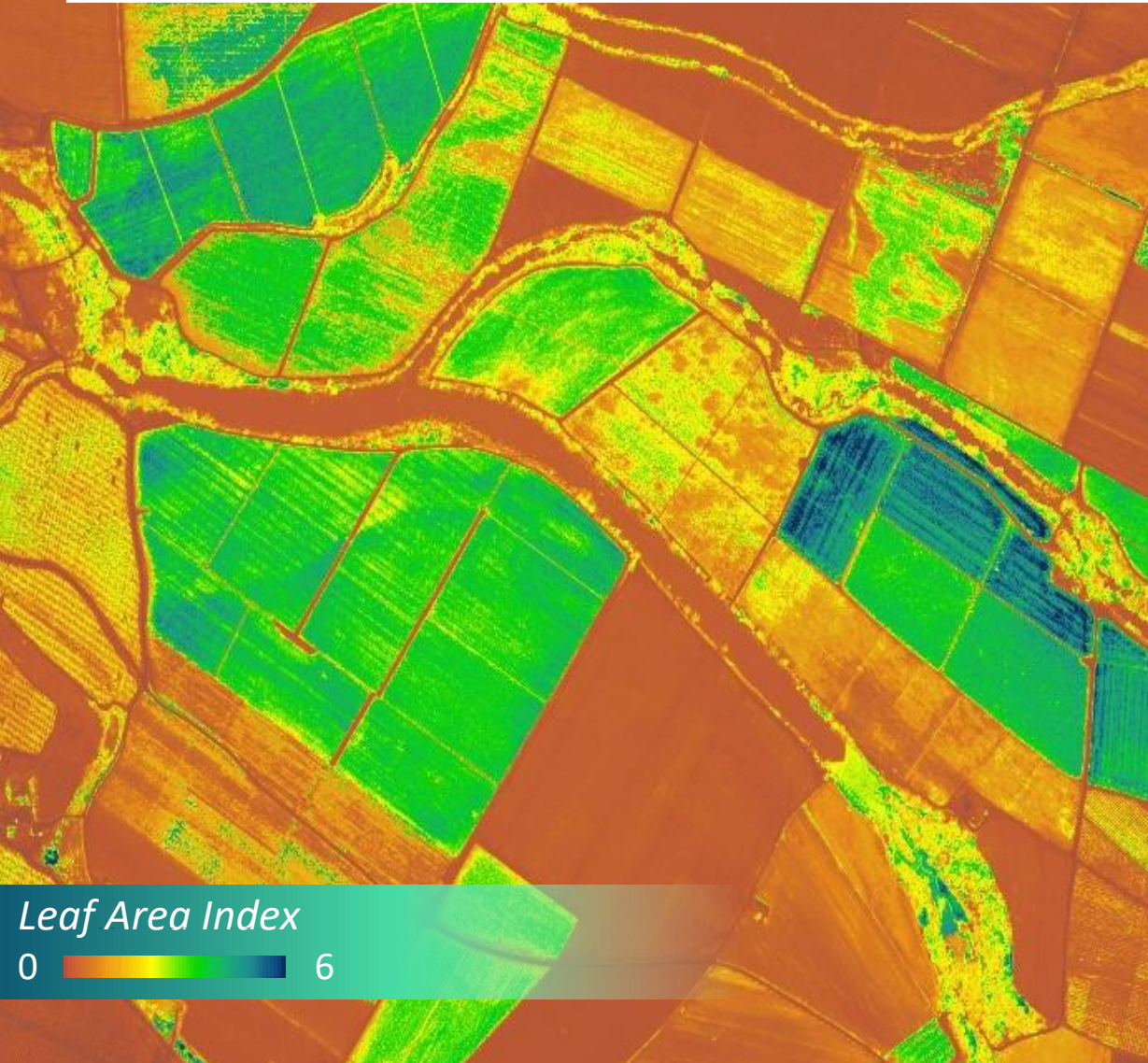
Electronic Terrain Obstacles Database



Application Example: Bathymetry



Application Example: Precision Agriculture



Application Example: Deforestation Monitoring with Starling

To Be Engaged
Possibly linked to deforestation

2016 - Q1 up to 2019 - Q4

Search by id, name or lat lon.

RSPO No 2.38988, 103.80072

Analytics Supply chain Attributes

Starling monitoring

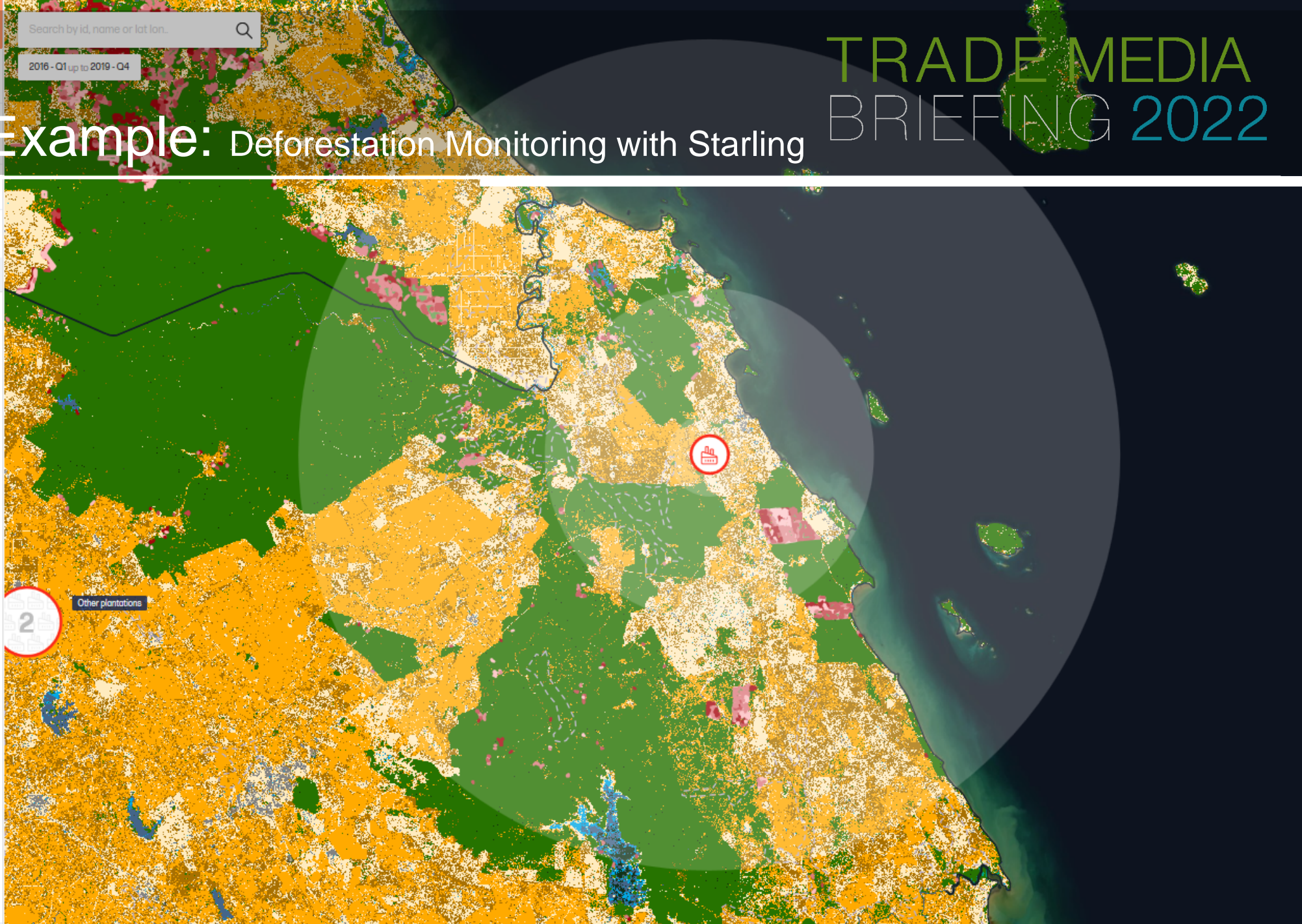
| | 5km | 20km | 50km |
|------|----------|----------|------|
| 0.00 | 1,518.49 | 5,168.50 | |

Hectares lost

| Year | 5 km | 20 km | 50 km |
|------|------|-------|-------|
| 2016 | ~50 | ~750 | ~100 |
| 2017 | ~50 | ~750 | ~100 |
| 2018 | ~50 | ~600 | ~100 |
| 2019 | ~50 | ~100 | ~100 |

Other plantations

2



OneAtlas Digital Platform

TRADE MEDIA BRIEFING 2022

IMAGERY

Archive and **Tasking** NEW
Multi-resolution and sensors

REFERENCE LAYERS

Basemap
Digital Elevation Model (WorldDEM)
3D textured models

ANALYTICS

Change Detection
Land Use & Map extraction
Activity Analysis & Monitoring

In streaming



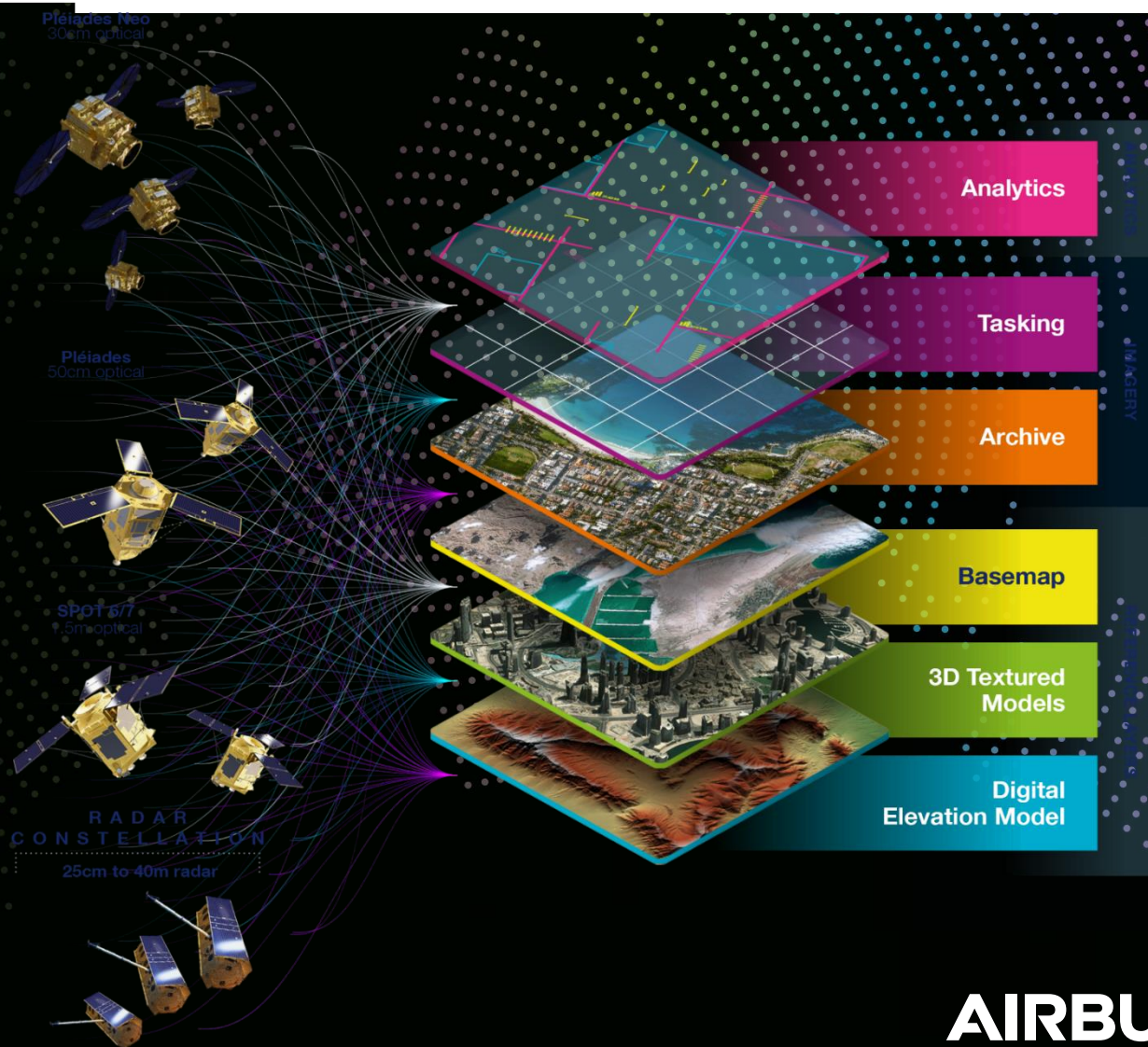
In download



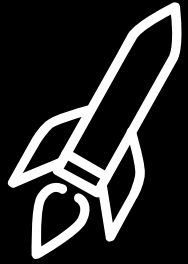
In multiple and flexible formats



API access



AIRBUS



TRADE MEDIA BRIEFING 2022

First two Pléiades Neo satellites were launched on April 28th and August 16th 2021

The two next satellites are ready for launch!